

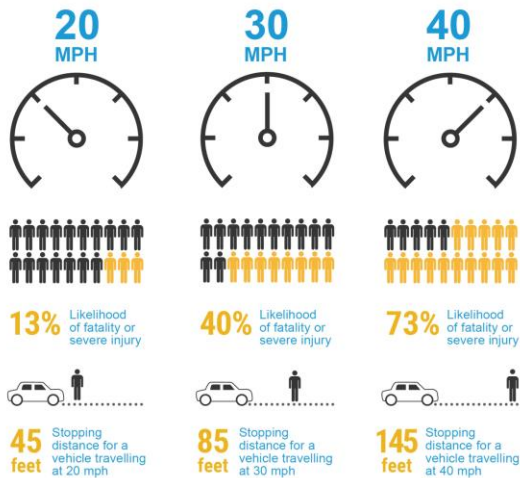
SPLOST 2020 Program

Transportation & Public Works Department
Proposed Project Presentations
February 6, 2019



Transportation & Public Works Department

Project #26 – Traffic Calming Program



Source: Tefft, Brian C. *Impact speed and a pedestrian's risk of severe injury or death*. *Accident Analysis & Prevention*. 50. 2013

Why are “calmer speeds” better?

- In 2015, **10,000** deaths (27%) occurred in speed-related crashes in US (IIHS)
- For a vehicle going 40 MPH:
 - **50%** increase in speed (60 MPH)
 - **125%** increase in energy ($\frac{1}{2}mv^2$)
- **Decreases** accessibility to neighborhoods
- **Increases** risks for pedestrians
- **Decreases** livability

Transportation & Public Works Department

#26 – Traffic Calming Program 1 of 6

Project #26 – Traffic Calming Program

Traffic Calming in Athens-Clarke County

- Neighborhood Traffic Calming Program (NTMP)
- Available for residential roads only
- Neighborhoods participate if no cut-throughs
- Arterials / collectors excluded
- Typical devices:
 - Speed tables
 - Radar speed signs



Project #26 – Traffic Calming Program

Vertical Treatments



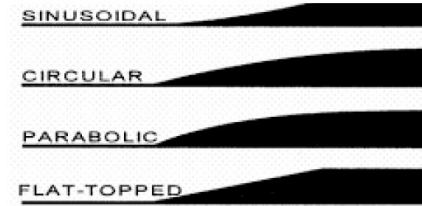
Speed cushion



Raised crosswalk



Speed hump



Curve profile options

Project #26 – Traffic Calming Program

Horizontal Treatments



Chicane



Neckdown



Curb extension



Neighborhood traffic circle

Project #26 – Traffic Calming Program

Options on Thoroughfares

- Lane width reduction
 - Corner extension at intersections
 - Choker islands
- Horizontal Deflection
 - Roundabout at intersections
 - Median islands to shift traffic
- Increased speed enforcement
 - Automated enforcement (school zones only)
 - Increased police presence



Project #26 – Traffic Calming Program

Project implementation:

- **Update** policy to include thoroughfares
- **Collect** speed data on priority areas
- **Implement** traffic calming projects
- **Evaluate** project effectiveness
- **Adjust** speed limits as appropriate



Source: Vision Zero Network

Project #26 – Traffic Calming Program

Questions?